

Internal Filter Replacement

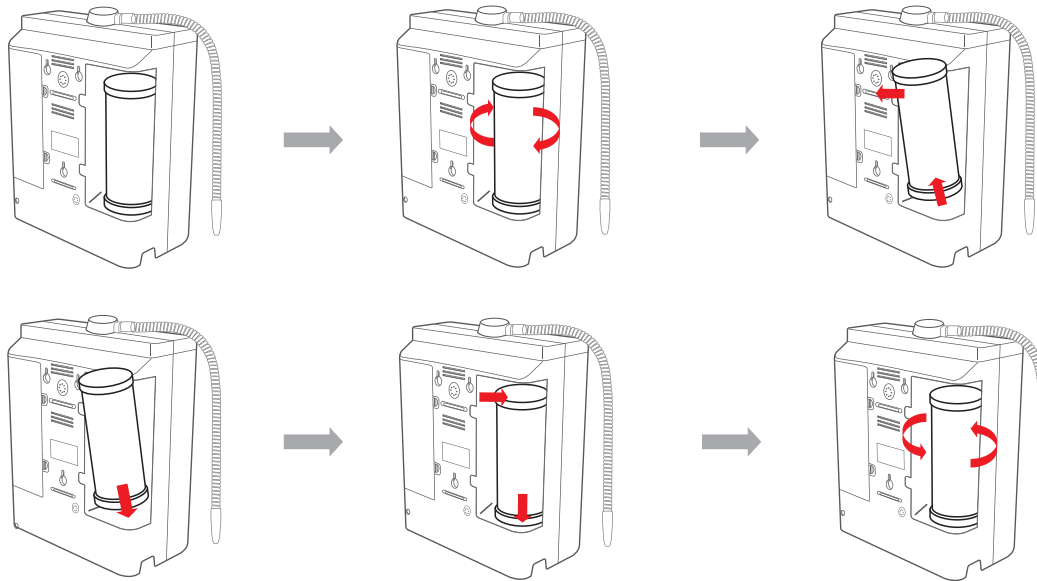
Countertop Filter Life

FILTER 1
0000

FILTER 2
0000

When the digital filter life indicator reaches "0000" or 1 bar only, it is time to replace your filter

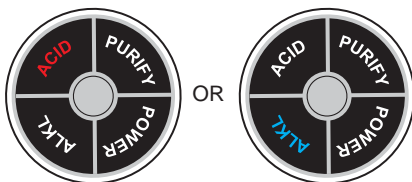
Undercounter Filter Life



1. After changing the first filter, press and hold the "FILTER 1" button for 3-5 seconds. You will hear 2 beeps and the filter counter indicator will reset to 3000.

2. After changing the second filter, press and hold the "FILTER 2" button for 3-5 seconds. You will hear 2 beeps and the filter counter indicator will reset to 5000.

1st Filter Reset 2nd Filter Reset



1st Filter Reset

2nd Filter Reset

1. After changing the first filter, you can reset it by pressing and holding the "ACID" button for 10 seconds and you will hear 2 beeps.

2. After changing the second filter; you can reset it by pressing and holding the "ALKL" button for 10 seconds and you will hear 2 beeps.

Tips After Filter Replacement:

- 1) Select the "Purified Water" setting and let the water run for 3-5 minutes after any filter replacement .
- 2) If the machine has not been used for a few days, let the water run for 3-5 minutes at the "Purified Water" setting before making Ionized Alkaline water for consumption.
- 3) Consult with the installer or retailer on the purchase of filters if in question about usage or installation.